



[www.teko-gmbh.com](http://www.teko-gmbh.com)



**Roxsta**cube

## Application



Discounters / supermarkets  
up to **1,200 m<sup>2</sup>**



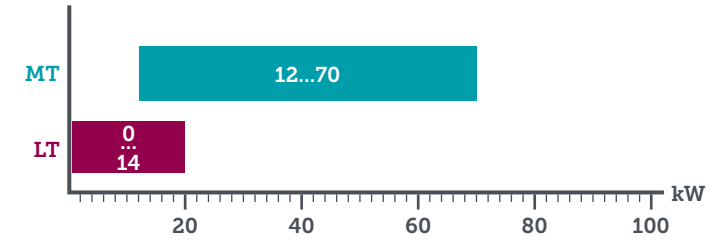
**MT cabinets**  
open: up to 60 m  
closed: up to 120 m



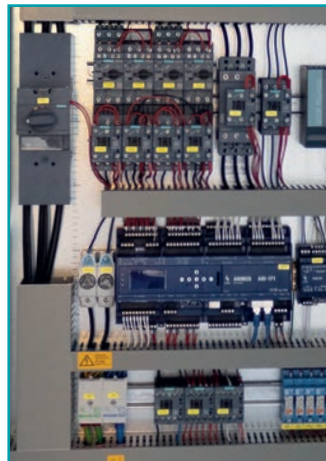
**LT shelf / island**  
up to 10 m  
1-2 LT cold rooms



## Performance



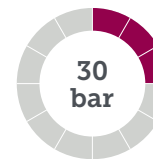
## Quality



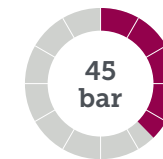
## Details

- Trans- & subcritical application
- 3 MT / 0-2 LT – different versions for capacity control
- TECO<sub>2</sub>nditioner
- Indoor & outdoor installation
- Noise reduction 10 / 15 dBA
- Heat recovery with bypass
- Receiver volume 80 L

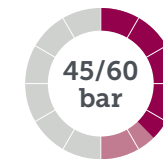
## Pressure levels



Suction line (LT)



Suction line (MT)



Medium pressure



High pressure

