



www.teko-gmbh.com



ROXSTAmicro



ROXSTAmicro



Application

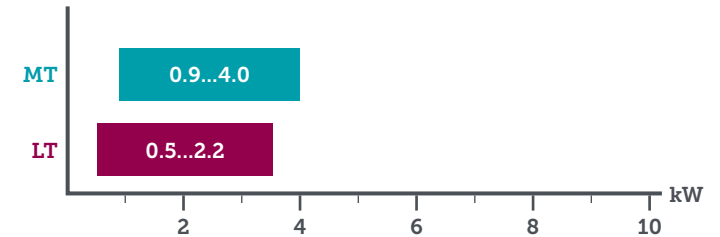


MT and LT units
and cold rooms

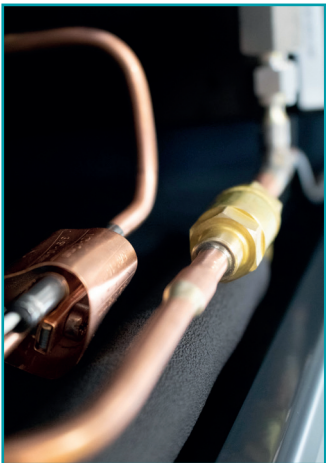
Air- & water-
cooled

CO₂

Performance



Quality



Details

- Solution for retrofitting / expansion
- **Air cooled version:** gas cooler / heater combination for food retail / commercial kitchens / ice making possible
- **Water cooled version:** plate heat exchanger for combination with water chillers / dry coolers possible

Pressure levels



Suction line
(MT/LT)



Medium
pressure



High
pressure